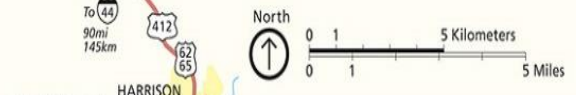


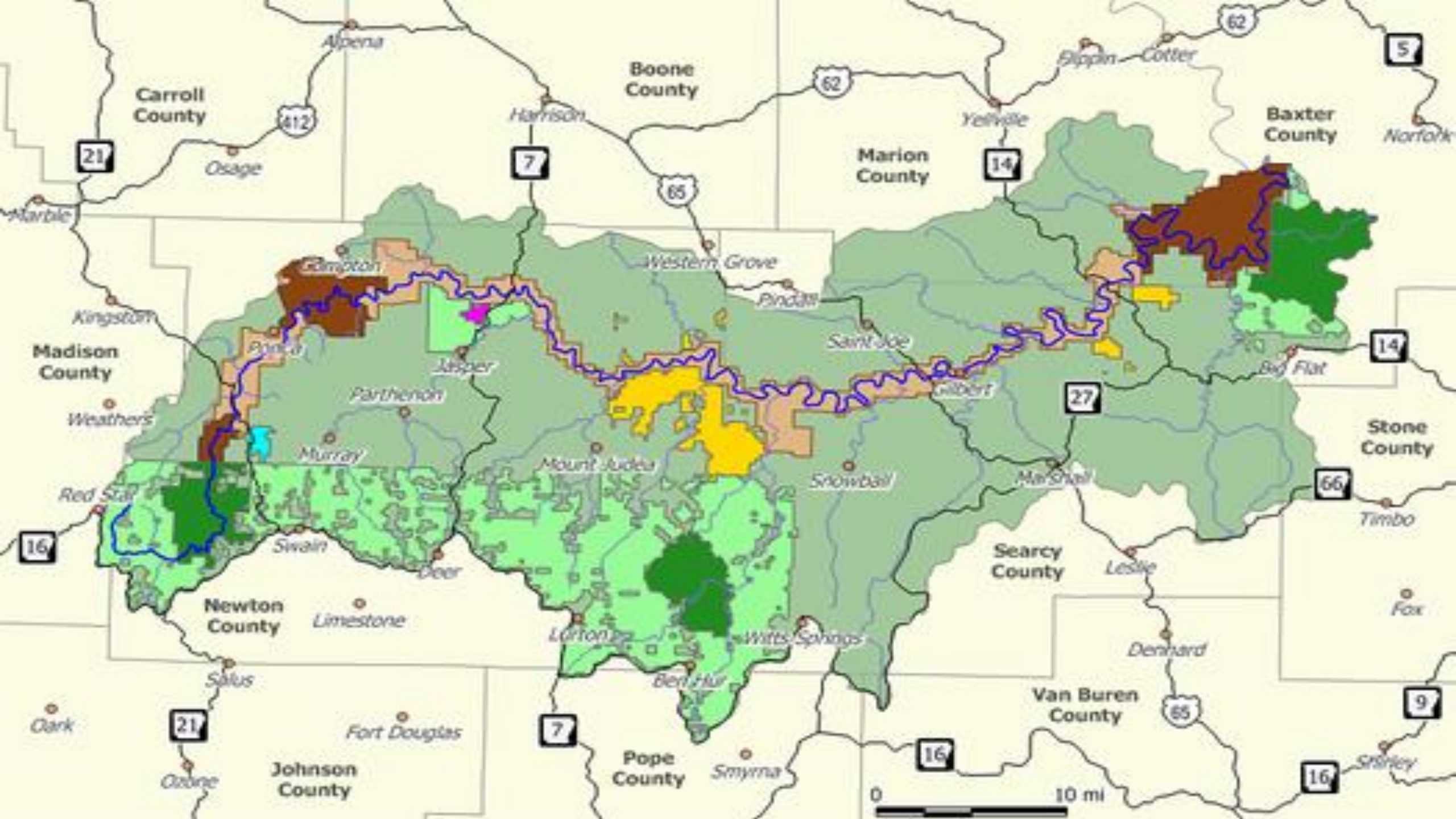
- River access point
 - Information station
 - Drinking water
 - Campground
 - Primitive campsite
 - Historic site
 - Interpretive trail
- Distances between river access points are shown on the diagram below. Average floating time at "ample floating level" is about two miles per hour.

- Buffalo National River Authorized Area
 - Wilderness area
 - Unpaved road
- Private property exists within the authorized area. Please respect owners' rights.

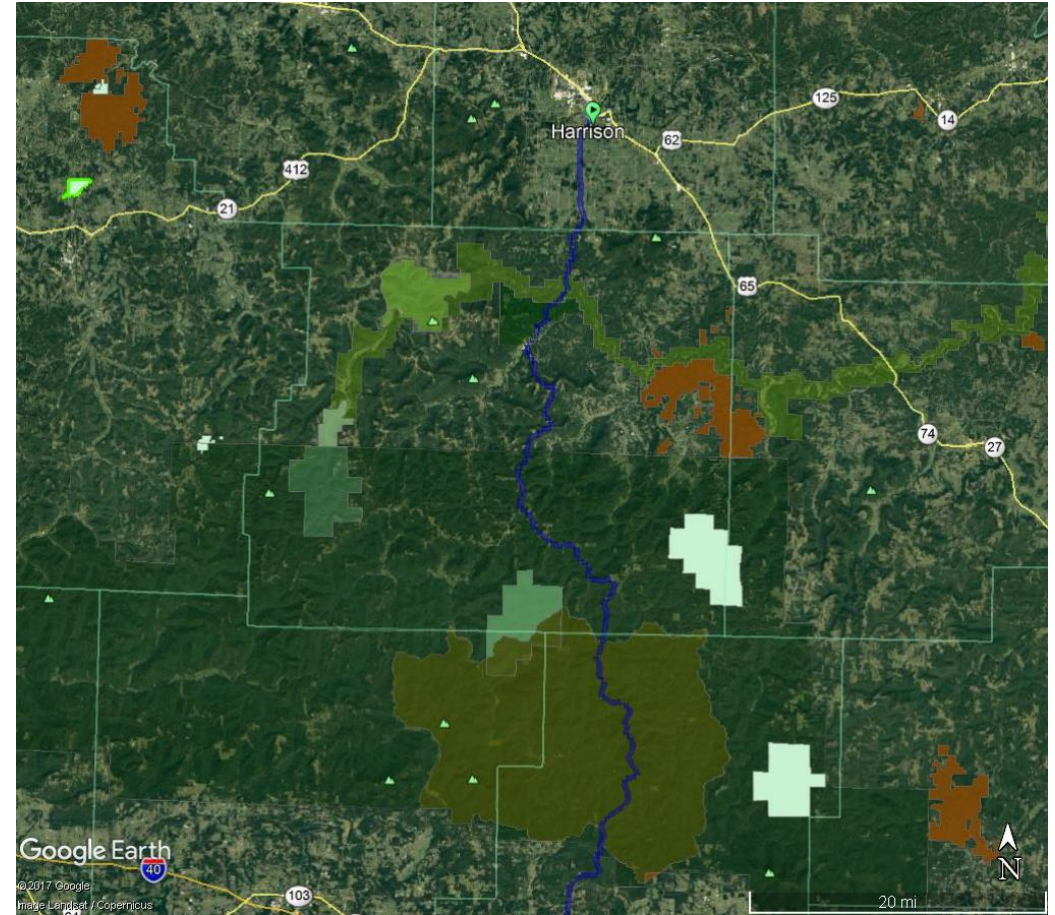
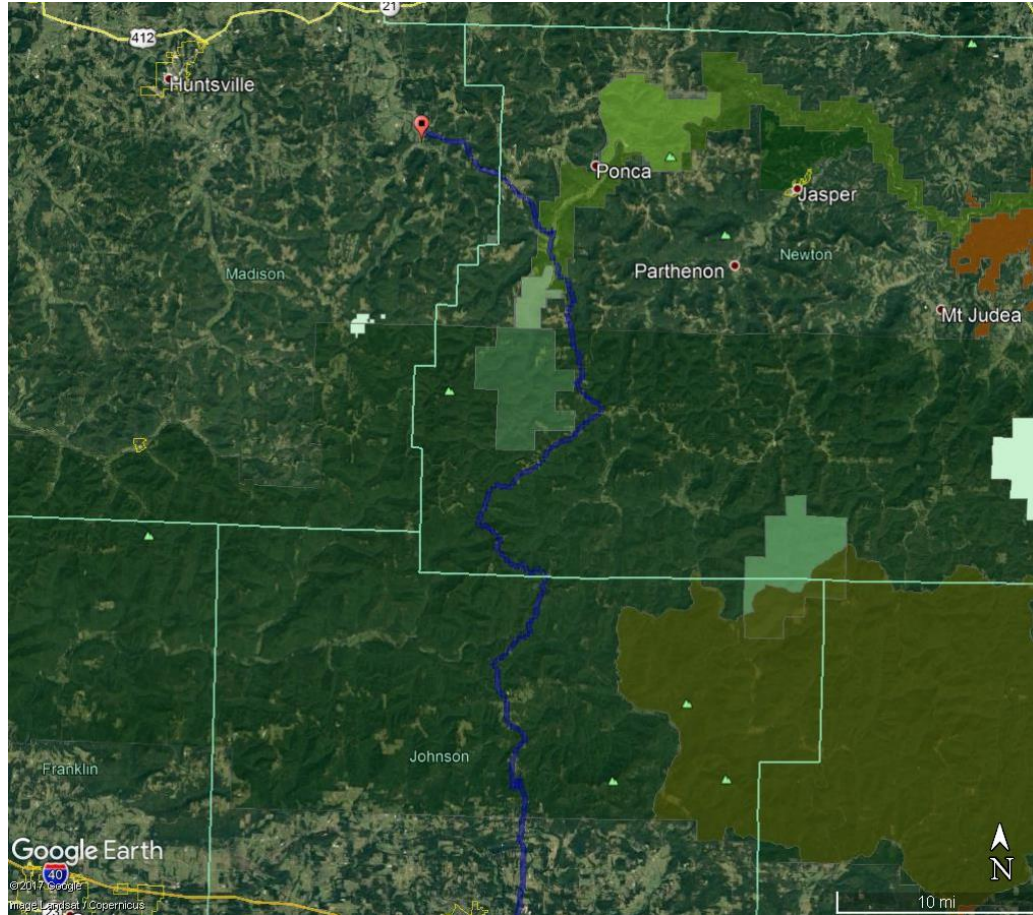
WARNING
Locally heavy rains cause rivers and streams to rise rapidly. Pick campsites that allow an escape route.

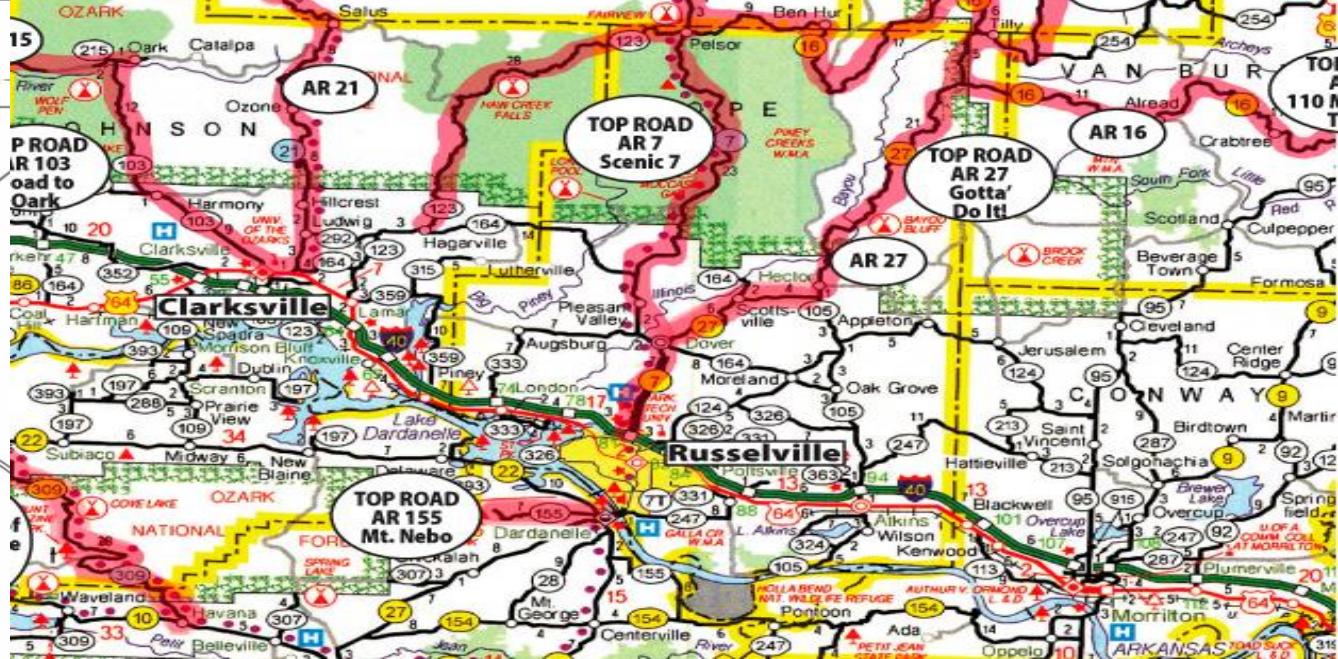
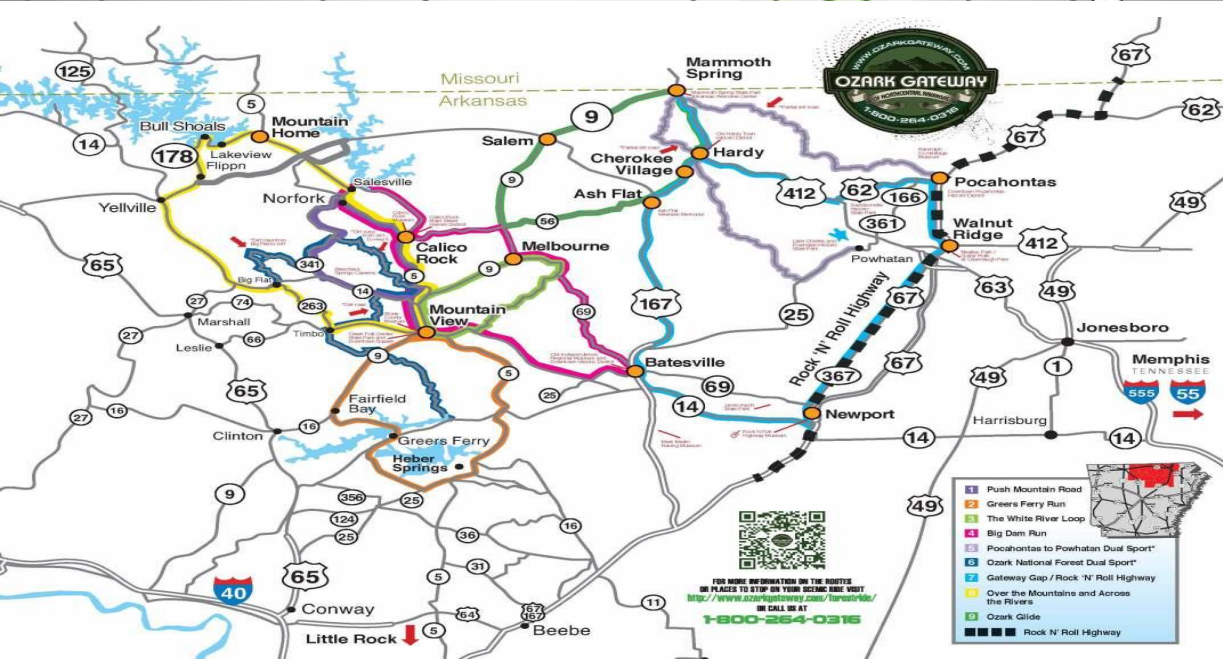
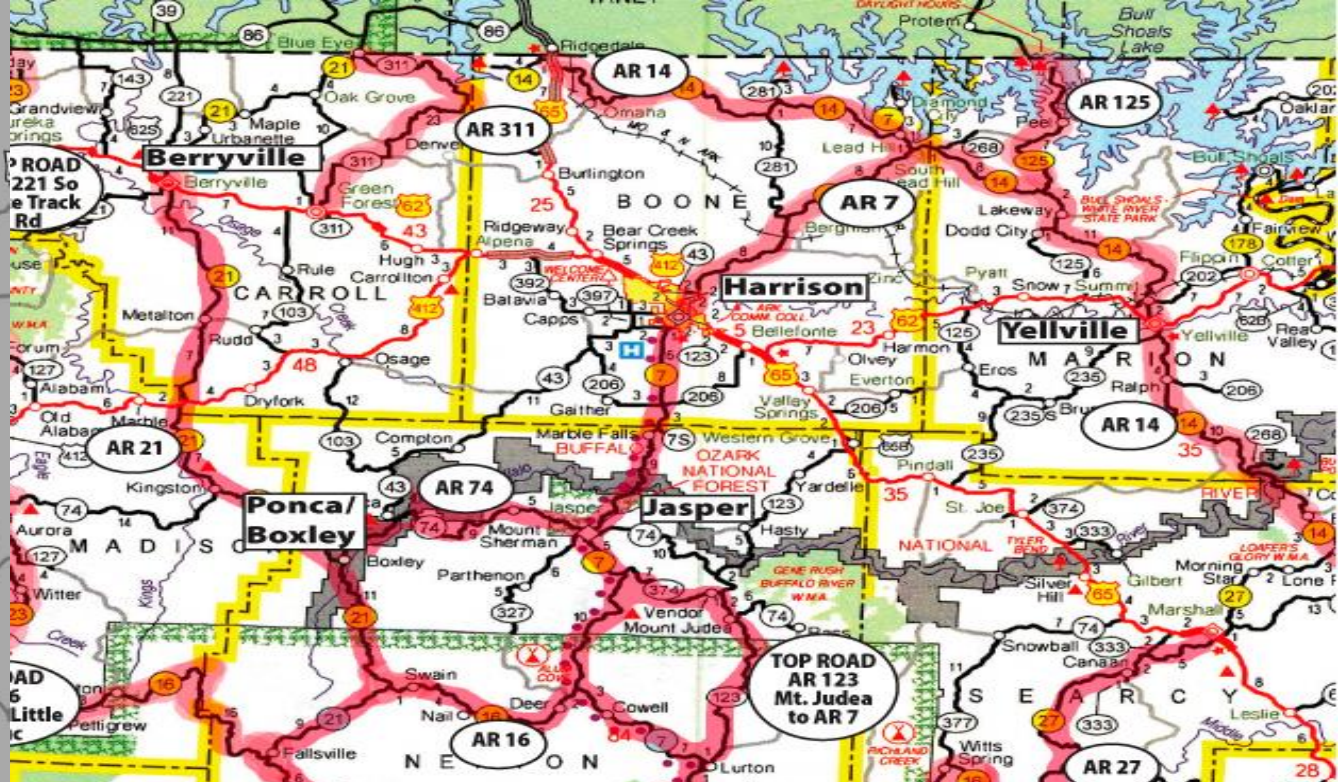
Do not dive or jump into the river. Swim only in clear, calm water and check below the surface for submerged objects.

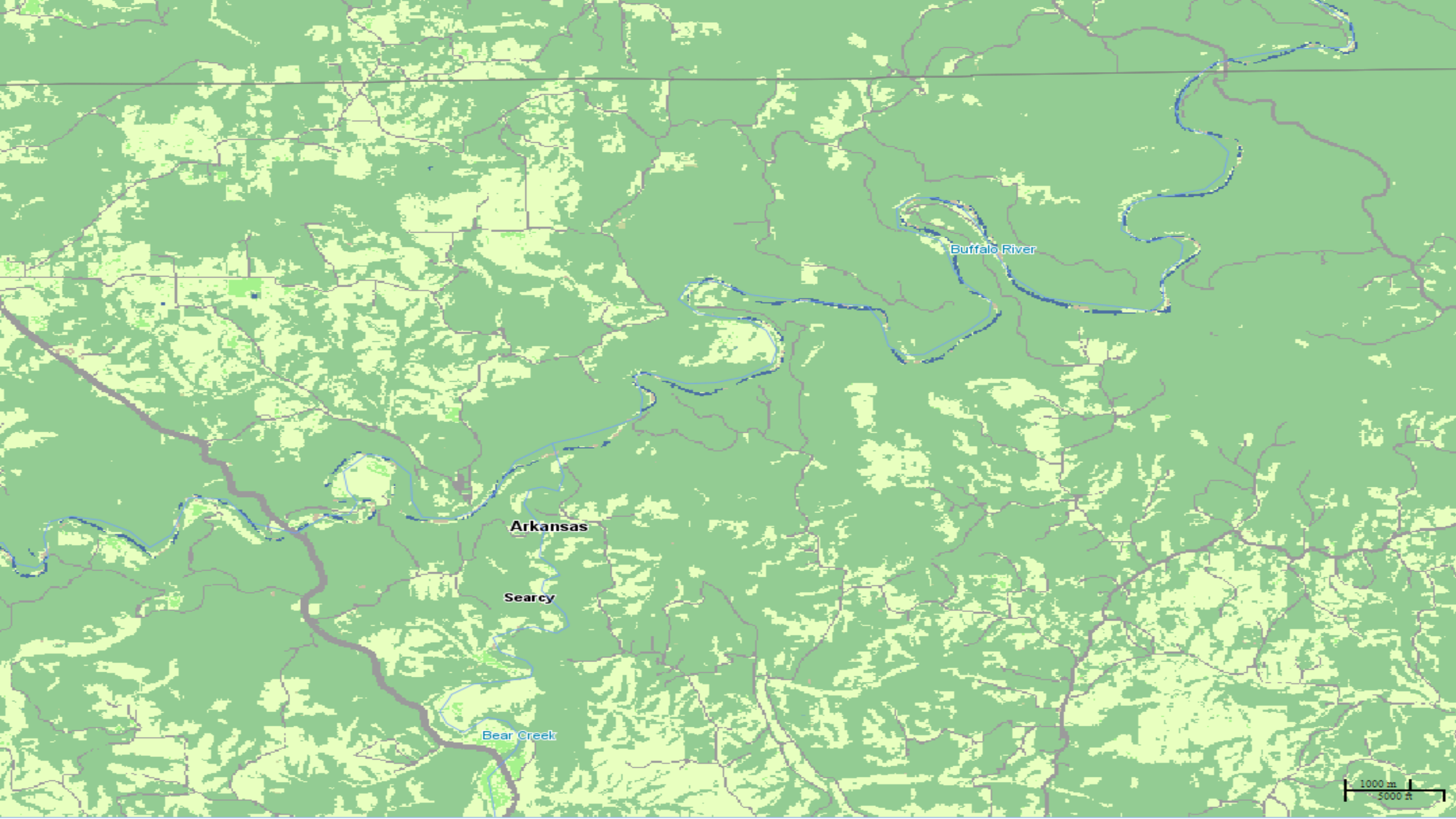




Designated Scenic Byways in the Buffalo River Watershed







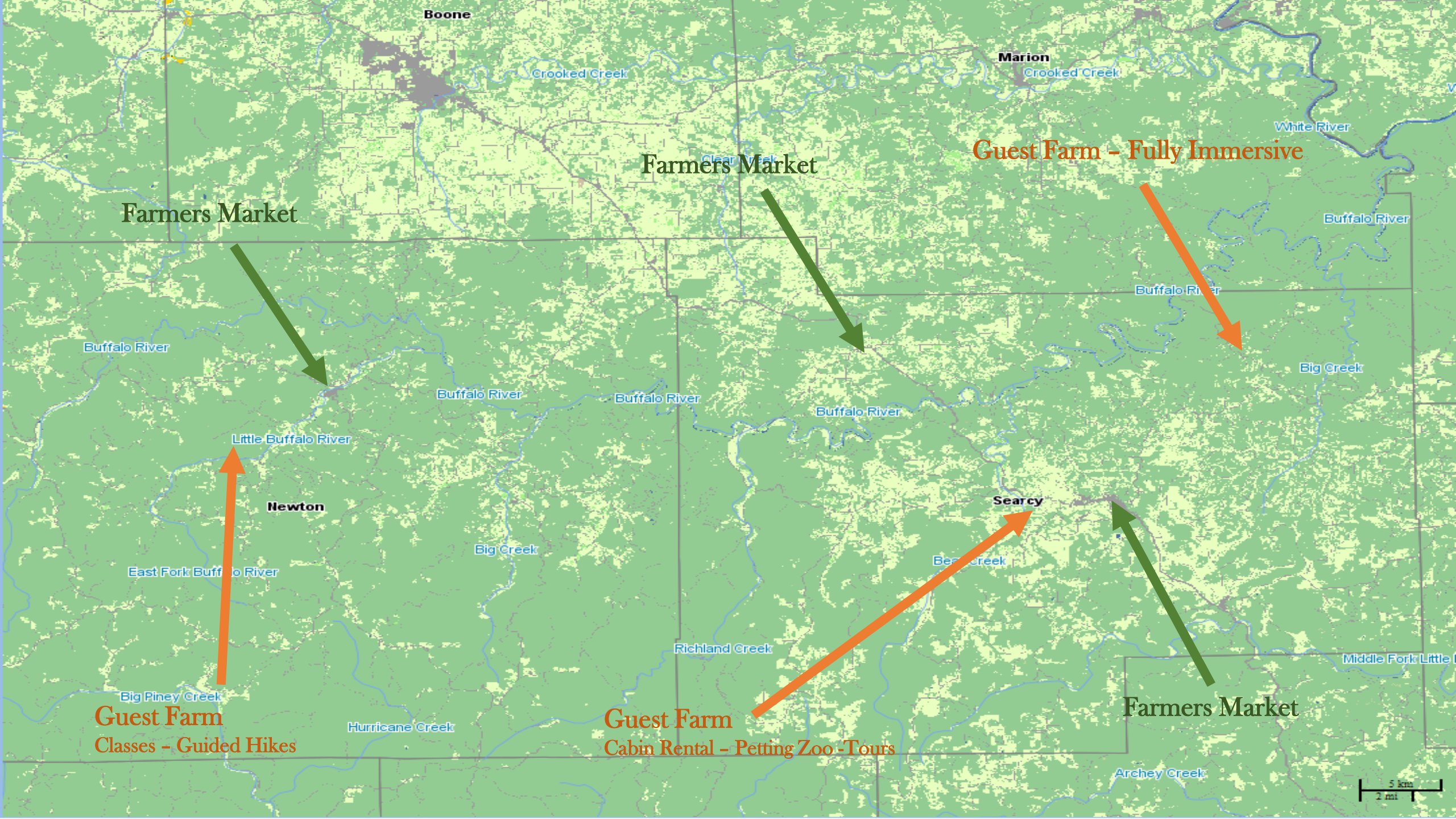
Buffalo River

Arkansas

Searcy

Bear Creek

1000 m
5000 ft



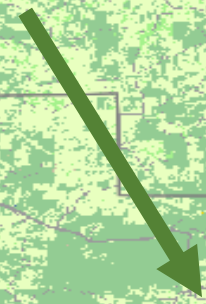
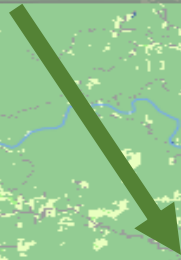
Boone

Marion

Farmers Market

Guest Farm - Fully Immersive

Farmers Market



Buffalo River

Buffalo River

Buffalo River

Buffalo River

Buffalo River

Big Creek

Little Buffalo River

Newton

Big Creek

Searcy

Big Creek

East Fork Buffalo River

Richland Creek

Middle Fork Little

Guest Farm

Classes - Guided Hikes

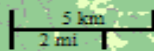
Guest Farm

Cabin Rental - Petting Zoo - Tours

Farmers Market

Hurricane Creek

Archey Creek





PERCEPTION

